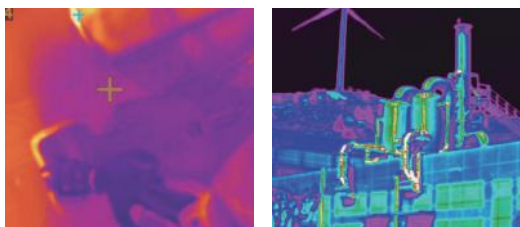


RCG300C

OGI Handheld Camera (Cooled)

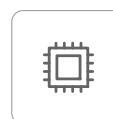
RCG300C is equipped with a high-accuracy cooled detector and can detect minor leaks of colorless VOC gases. It quickly scans large areas and accurately locates leak positions without actual contact. It is widely applicable for emergency response and environmental protection, third-party leak detection and repair (LDAR), and self-inspection of emissions by oil and gas, petrochemical enterprises, ensuring gas safety and emission reduction.



Product Highlights

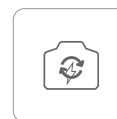
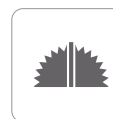
High-Accuracy Cooled Module for Accurate Leakage Detection

- 320×256 high-accuracy cooled detector
- Gas enhancement mode makes trace gas clearly visible
- Hundreds of hazard gases can be detected



Sturdy, Reliable and Safe to Use

- IP54 grade, magnesium-aluminum alloy shell, robust and reliable
- Ex ic nC op is IIC T6 Gc explosion-proof certification for enhanced safety



Quick Locating of Gas Leakage

- Support large-scope scanning, convenient and efficient
- Equipped with 2 types of lenses, supporting 16× digital zoom, taking into account both far and near leakage points
- Rotatable OLED viewfinder and rotatable display for convenient observation



Efficient and Convenient Data Analysis

- With GPS to locate the site, making it easier to develop the test report
- Multiple palette modes to meet various observation tasks

Specifications

Detector Resolution	320×256
Spectrum Range	3.2~3.5 μm
Pixel Pitch	30 μm
Detection Sensitivity	<10mK
Frame Rate	30Hz
Focal Length	50mm (support/optional) 22.5mm (standard)
FOV	50mm lens: 11°×8.8° (support/optional) 22.5mm lens: 24.5°×19.6° (standard)
Digital Zoom	1×~16× infinite zoom
Measurement Mode	Max./Min./Central/Trackable max. temperature
Point Temperature Measurement	Five points, including max./min./average
Visible Light Camera	Built-in 16-megapixel visible light camera
Image Mode	Infrared image, visible light image, dual-spectrum fusion, outline fusion
Palette	12 palettes, including iron red, inverse iron red, rainbow, feather red, white-hot, black-hot, etc.
Image Enhancement	DDE, digital image enhancement, gas enhancement
Image Format	Standard JPEG, containing measurement data
Video Format	MP4
Voice Recording	Storing voice recordings for 200s or longer with images (Bluetooth connection required)
GPS Information Display	Display GPS information and approximate location information on images, supporting GPS/GLONASS/BeiDou
LCD Screen	5.5-inch OLED 1920×1080 with capacitive touch
Wi-Fi	2.4GHz and 5GHz bands, supporting 802.11a/b/g/n/ac
Interface	Type-C port, miniHDMI port, TF card slot, SIM card slot
Battery Life	≥ 4 hours (at room temperature)
Gases Detectable Containing at Least	400 common VOC gases such as methane, ethane, propane, butane, pentane, octane, n-heptane, ethylene oxide, bromomethane, bromoethane, chloromethane, 1-hexane, ethylene, propylene, isoprene, isobutylene, 1,3-butadiene, benzene, toluene, xylene, trimethylbenzene, paraxylene, ethylbenzene, styrene, 1,2-dimethylbenzene, methanol, ethanol, isopropyl alcohol and methyl isobutyl ketone
Operating Temperature	-10°C ~ 50°C
Ingress Protection Rating	IP54, GB/T 4208-2017
Explosion-Proof Certification	Ex ic nC op is IIC T6 Gc
Impact Resistance	30g, GB/T 2423.5-2019
Vibration Resistance	2.5g, GB/T 2423.10-2019
Dimensions	(319×190×197)mm±10mm
Weight	≤2.4kg±0.5kg

Applications



Petrochemical Industry



Emergency Response and Environmental Protection



Safety Operation and Maintenance



Oil and Natural Gas