



# RT400/630 Series Expert Thermal Camera

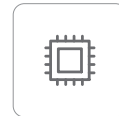
Equipped with a new-generation detector with a resolution of  $480 \times 360 / 640 \times 512$  and a NETD as low as 35mK, the new RT400/630 series can capture more subtle hotspots, and display sharper and cleaner thermal images. The device has rich and powerful features such as Android OS, trend analysis, area measurement. It is a new strong tool for expert-level full-scene analysis.



## Product Highlights

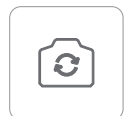
### Clear Thermal Images, Precise Temperature Measurement

- Equipped with a 12μm uncooled infrared detector, with a resolution of  $640 \times 512 / 480 \times 360$ , supporting super resolution.
- NETD as low as 35mK, and measurement accuracy of  $\pm 2^\circ\text{C}$  or  $\pm 2\%$  of reading (whichever is greater).



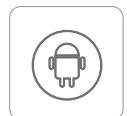
### Various Lenses and Fast Focusing

- Standard 25° lens, with optional wide-angle, long-focus, ultra-long-focus, and macro lenses, flexible for diverse scenarios.



### Functional Upgrade to Improve Efficiency

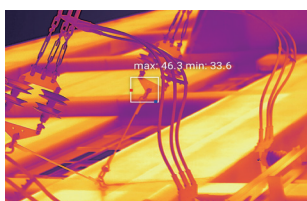
- Android operating system, more convenient to operate.
- Support intelligent image stabilization, making temperature measurement images more stable.
- Support laser rangefinding and area measurement.



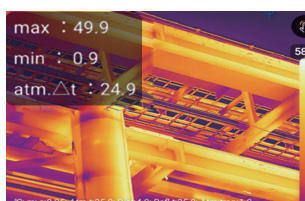
### Intelligent Analysis, Efficient Temperature Measurement

- Support up to 20 points/lines/areas to analyze more temperature details in the screen.
- Support customized isotherms to highlight temperature segments or areas that need more attention.
- Support intelligent routine inspection, enabling import and editing of general task packages, etc.

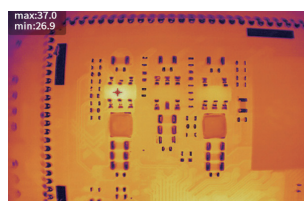
## Applications



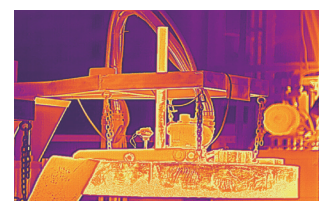
Electric Routine Inspection



Chemical Operation and Maintenance



Electronic and Electrical R&D



High Temperature Material Monitoring

Specifications		RT400	RT630
Thermal Imaging			
Detector Type	12μm uncooled infrared detector		
Infrared Resolution	480×360		640×512
Super Resolution	960×720		1280×1024
Spectral Band	7.5-14μm		
Thermal Sensitivity (NETD)	<35mK (25°C,F1.0)		
Frame Rate	25Hz		
Focal Length	Standard lens: 17.7mm; super telephoto lens: 60.9mm; telephoto lens: 31.5mm; wide-angle lens: 9.5mm; macro lens (0.2×): 13mm; super macro lens (0.4×): 14.8mm.		
FOV	Standard lens: 25°×20°; super telephoto lens: 7°×5.6°; telephoto lens: 14°×11.2°; wide-angle lens: 45°×36°.		
Spatial Resolution (IFOV)	Standard lens: 0.92mrad; super telephoto lens: 0.27mrad; telephoto lens: 0.52mrad; wide-angle lens: 1.71mrad; Macro lens: One pixel corresponds to 60μm; super macro lens: One pixel corresponds to 30μm.	Standard lens: 0.68mrad; super telephoto lens: 0.2mrad; telephoto lens: 0.38mrad; wide-angle lens: 1.26mrad; Macro lens: One pixel corresponds to 60μm; super macro lens: One pixel corresponds to 30μm.	
Focus Mode	Manual focus, one-button center focus, automatic center focus, single-touch automatic focus, laser-assisted focus, electric micro focus		
Minimum Imaging Distance	Standard lens: 0.4m; super telephoto lens: 4m; telephoto lens: 3m; wide-angle lens: 0.2m; macro lens: 39mm; super macro lens: 19mm		
Measurement Range	-20°C~+150°C, 100°C~650°C; optional: 400°C~1500°C		
Measurement Accuracy	±2°C or ±2% of readings, whichever is greater.		
Image Display			
Display	5-inch OLED touch screen, resolution 1280×720		
Visible Light Camera	13 megapixels		
Digital Zoom	1× ~ 10×		
Palettes	19 options		
Image Mode	Infrared, visible light, PIP, dual-spectrum fusion		
Temperature Width Stretch	Support		
Measurement and Analysis			
Analysis Functions on the Device	Support up to 15 movable points, lines, frames, circles and polygons, and up to 5 preset modes	Support up to 20 movable points, lines, frames, circles and polygons, and up to 5 preset modes	
Laser Rangefinding	Support		
Area Measurement	Support		
Hygrothermograph	Support		
Positioning	Support		
Temperature Difference Analysis	Support		
Trend Analysis	Supports temperature trend recording and analysis.		
Image Freezing	Support		
Analysis Report	PDF format. Support editing and template importing on the PC client.		
Supporting Software	PC (Infrared Analysis Software) & Mobile Device (iOS/Android APP)		
Image Storage			
Storage Medium	Standard 64GB Micro SD, Support SD, SDHC, SDXC, up to 2TB		
Text Notes	Support		
Voice Notes	Support		
Video Functions			
Radiate Infrared Video Recording	Support compressed full radiation video recording (.irv), up to 25Hz video recording.		
Non-radiate Infrared or Visible Light Video Recording	Standard MP4 video recording		
Radiate Infrared Video Stream Transmission	TYPE-C/WLAN connection to PC, for real-time transmission of radiation infrared video streams		
Non-radiate Infrared Video Stream Transmission	RTSP H.264		
Video Resolution	1280x720		
System Functions			
Intelligent Image Stabilization	Support		
Intelligent Panoramic Stitching	Support panoramic stitching on the PC client, and one-click synthesis.		
Intelligent Routine Inspection	Supported. General task package import and editing, standard and automatic naming of images		
Routine Inspection Record Self-inspection	Support		
Dual-Spectrum Video Recording	Simultaneous infrared video and visible light video recording, in MP4 format.		
Communication Protocol	Wi-Fi, Bluetooth, USB, DP, Type-C to HDMI		
Voice Control	Voice assistant, quick command recognition		
Flashlight	Support		
Others			
Microphone/Speaker	Support		
Battery	10,000mAh lithium-ion battery, field-replaceable, support fast charging		
Charging Mode	USB Type-C or desktop charger		
Battery Life	Continuous operating time ≥ 6 hours (depending on the actual environment and service conditions)		
External Interface	USB3.0 Type-C, SD card, SIM card, Mini HDMI		
Tripod Socket	UNC 1/4-20 interface for tripod		
Operating Temperature	-20°C~+55°C		
Operating Humidity	10%~95% (non-condensing)		
Storage Temperature	-40°C~+70°C		
IP Grade	IP54		
Shock and Vibration	Shock: 25g (IEC 60068-2-27); vibration: 2.5g (IEC60068-2-6)		
Weight and Dimensions	About 1.3kg (with battery), 144×129×307mm (subject to actual situations)		
Authentication	CE/RoHS/CMA, etc.		
Packing List	Thermal camera×1, standard lens, lithium-ion battery×2, charging stand, charger (with plug for use in multiple countries), charging cable, Bluetooth headset, SD card 64G, Type-C cable, lens hood, mold drawing, data download card, calibration certificate, certificate of qualification, hand strap (with buckle), safety box, lens cap (with screws).		

RayThink Technology Co., Ltd.

Company Address: No.5 Wanshoushan Road, Fulaishan Street, Yantai Area of China (Shandong) Pilot Free Trade Zone  
Postal Code: 264000    Official Website: <http://www.raythink-tech.com>    Service Email: [sales@raythink-tech.com](mailto:sales@raythink-tech.com)

\*The information is for illustrative purposes only. The pictures and technical specifications are subject to change without prior notice. Sample No.: G2024-RT400/630-2P001