

TE464

Dual-Spectrum Explosion-Proof PTZ Camera

TE464 dual-spectrum explosion-proof PTZ camera equipped with an HD visible light camera and a 640×512 thermal imaging camera. TE464 can rotate 360° to view all surroundings. 304 or 316 stainless steel is using for housing to let the camera operate in hazardous area.



12μm Uncooled Infrared Detector

Adopting the latest 12μm uncooled infrared detectors, integrated with advanced infrared imaging algorithms for better image quality.

Dual Explosion-Proof Certification

Certified with dual explosion-proof ratings for dust and gas: Exd IIC T6 Gb/Ex tD A21 IP68 T80°C.

Fire Point Detection

Features an integrated intelligent fire detection algorithm for efficient and accurate monitoring.

Dual-Spectrum Imaging

All-weather, 24/7 security monitoring with dual thermal&visible light imaging.

Accurate Temperature Measurement

Measurement range from -20°C to 550°C, accuracy ±2°C or 2%.

Intelligent Video Analysis

Support tripwire/intrusion detection, as well as intelligent detection of fire point.

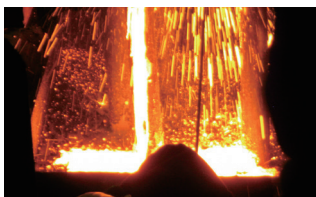
Specifications

Technical Specifications	TE464
Thermal Module	
Detector Type	VOx, uncooled FPA detector
Spectral Range	8~14μm
NETD	≤40mK(@25°C, F#1.0, 25Hz)
Resolution	640×512
Pixel Pitch	12μm
Focal Length	25mm
Optical Module	
Sensor	1/1.8" 4MP CMOS image sensor
Resolution	2688×1520
Focal Length	6.5mm~130mm
PTZ	
Pan	360° continuous rotation
Tilt	-90°~+90°
Temperature Measurement	
Measurement Range	-20°C~+550°C
Measurement Accuracy	±2°C or ±2%
Measurement Rules	Support 4 temperature measurement rules(fullframe, point, line, area)
Smart Function	
Fire Detection	Support
VCA	Line Crossing&Intrusion detection
Linkage Action	Video/ Snapshot/Email/Alarm output/sound and light alarm
System Interface	
Power	85V~260V AC/24V DC 3A (optional)
Network	1×RJ45 10M/100M self-adaptive interface
Alarm Input	1×input
Alarm Output	1×output
RS485 Interface	1×RS485
General	
Work Environment	-40°C~+60°C; <90%RH
Explosion Proof	Exd IIC T6 Gb/Ex tD A21 IP68 T80°C
Protection	IP68
Shell Material	304/316L stainless steel material, suitable for use in corrosive environments such as chemical and acid-base conditions.
Power Consumption	≤100W (thermostat activated)
Dimensions (mm)	436×296×406
Weight	27kg

Application Scenarios



New Energy



Metallurgy



Textiles



Food

RayThink Technology Co., Ltd.

✉ sales@raythink-tech.com

☎ +86-19806191838

🌐 www.raythink-tech.com

📍 Room 3002, Building 2, No.5 Wanshoushan Road, Fulaishan Street, Yantai Area of China (Shandong) Pilot Free Trade Zone

■ This manual is illustrative only. Technical specifications are subject to change without prior notice.