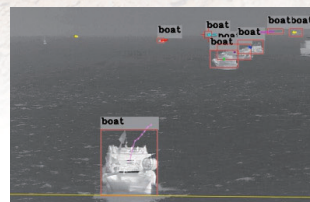




SilentW-UM6B Series

Portable Infrared Panoramic Camera

SilentW-UMB is a compact solution for 360° panoramic monitoring. It equipped the latest 12μm thermal detector and kit with an 8-hour battery time & tablet PC. It is very convenient to carry and to deploy the camera to create a perimeter security solution easily.



Industry-Leading Infrared Detector

Adopts the latest 12μm uncooled infrared detector or high-performance MWIR cooled detector, and advanced infrared image algorithms to ensure clear imaging at greater distances.



360° Panoramic Monitoring

Detects a full circle in approximately 2 seconds and delivers real-time panoramic video images, enabling comprehensive visual monitoring without blind spots.



Intelligent Detection Algorithm

Deep learning AI algorithm to recognize human, vehicle, ship, and UAV targets.



Compact for Rapid Deployment

Portable kit includes 8-hour battery, 50m wireless transmission and tablet PC, easy for deployment.



Multi-Target Detection

Capable of simultaneously detecting & tracking up to 128 targets, detection range up to 1.5km.



Various Application Scenarios

Equipped with a tripod and bottom suction cup. Can be deployed for ground monitoring or mounted on the roof of a vehicle, meeting the requirements for mobile patrols and vehicle-mounted patrols.



Specifications

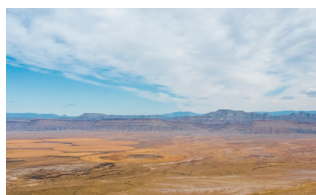
Technical Specifications		SilentW-UM619B	SilentW-UM625B
		Thermal Module	
Detector Type		Uncooled	
Detector Resolution		640×512	
Focal Length		19mm	25mm
Panoramic Image Resolution		9900×512	13000×512
360° Scanning Frequency		0.555Hz	0.444Hz
180° Sector Scanning Frequency		1.11Hz	0.854Hz
Horizontal FOV Range		360°	
Vertical FOV		18.4°	14°
Tilt Range		±5°	
Protection		IP66	
Dimension (mm)		161×205×290.5	
Weight		5.1kg	
Work Environment		-40°C~+50°C	
Detection Distance	Human (1.7m)	600m	750m
	Vehicle (4m)	1200m	1500m
		Battery	
Battery Capacity		24V 6Ah(Equipped with 2 batteries)	
		Wireless Transmission	
Transmission Mode		wifi	
Transmission Distance		50m	
		Portable Operating Tablet	
Operating System		windows	
Dimensions		10.5"	

*The target detection distance refers to the maximum distance in an ideal environment.

Application Scenarios



Mobile Patrol



Border Security



Oil and Gas Pipelines



Critical Infrastructure Protection

RayThink Technology Co., Ltd.

✉ sales@raythink-tech.com

☎ +86-19806191838

🌐 www.raythink-tech.com

📍 Room 3002, Building 2, No.5 Wanshoushan Road, Fulaishan Street, Yantai Area of China (Shandong) Pilot Free Trade Zone

■ This manual is illustrative only. Technical specifications are subject to change without prior notice.