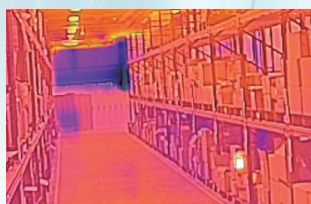




# PD2 Series

## Dual-Spectrum Speed Dome Camera

PD2T dual-spectrum speed dome camera equipped a  $256 \times 192$  resolution,  $12\mu\text{m}$  pixel pitch thermal detector and a 5MP visible light sensor with 20x optical zoom lens. It supports tripwire/intrusion detection with AI human/vehicle classification algorithm. The PT system offers more flexibility for surveillance. It can be used for perimeter protection and fire prevention in residential areas and commercial facilities.



### 12 $\mu\text{m}$ Uncooled Infrared Detector

Adopting the latest 12 $\mu\text{m}$  uncooled infrared detectors, integrated with advanced infrared imaging algorithms for better image quality.



### Accurate Temperature Measurement

Measurement range from  $-20^{\circ}\text{C}$  to  $550^{\circ}\text{C}$ , accuracy  $\pm 2^{\circ}\text{C}$  or 2%.



### Intelligent Alarm

Provides 360° panoramic monitoring, detects thermal imaging targets, integrates with visible light cameras for zooming and tracking, and supports alarm linkage for various events with audible and visual alarms to reduce false alarms.



### Dual-Spectrum Imaging

All-weather, 24/7 security monitoring with dual thermal&visible light imaging.



### AI Target Recognition

Smart video content analysis, human/vehicle recognition on thermal channel for crossline/intrusion detection.



### Platform Integration

Support ONVIF, provide SDK&demo for development; provide NVR and VMS software for application.

## Specifications

Technical Specifications	PD225T	
	<b>Thermal Module</b>	
Detector Type	VOx, uncooled FPA detector	
Spectral Range	8~14μm	
NETD	≤40mK(@25°C,F#1.0,25Hz)	
Resolution	256×192	
Pixel Pitch	12μm	
Focal Length	7mm	10mm
	<b>Optical Module</b>	
Sensor	5MP 1/2.8"CMOS	
Resolution	2560×1920	
Focal Length	5.4mm~108mm, 20× optical zoom	
IR Distance	50m	
	<b>PTZ</b>	
Pan	360° continuous, 0.1°~120°/s	
Tilt	0°~+90°, 0.1°~60°/s	
Preset	255	
Scan Mode	Preset/Pattern Scan/Patrol Scan/ Linear Scan/Panorama Scan	
	<b>Temperature Measurement</b>	
Measurement Range	-20°C~+550°C	
Measurement Accuracy	±2°C or ±2%	
Measurement Rules	Support 4 temperature measurement rules(fullframe, point, line, area)	
	<b>Smart Function</b>	
Fire Detection	Support	
VCA	Support Line Crossing&Intrusion detection with AI human/Vehicle recognition	
Linkage Action	Video/ Snapshot/Email/Alarm output/sound and light alarm	
	<b>System Interface</b>	
Power	DC 12V±25%/PoE(802.3af/at)	
Network	1×RJ45 10M/100M self-adaptive interface	
Audio Input	1×input	
Audio Output	1×output	
Alarm Input	2×input	
Alarm Output	1×output	
Storage Interface	Micro SD card (up to 256G)	
Reset Button	Support	
RS485 Interface	1×RS485	
	<b>General</b>	
Work Environment	-40°C~+70°C; <95%RH	
Protection	IP66	
Power Consumption	≤20W	
Dimensions (mm)	265×147.5×248.7	
Weight	2.48kg	

## Application Scenarios



Park Perimeter



River Monitoring



Electric Temperature Measurement



Warehouse Security

## RayThink Technology Co., Ltd.

✉ sales@raythink-tech.com

☎ +86-19806191838

🌐 www.raythink-tech.com

📍 Room 3002, Building 2, No.5 Wanshoushan Road, Fulaishan Street, Yantai Area of China (Shandong) Pilot Free Trade Zone

■ This manual is illustrative only. Technical specifications are subject to change without prior notice.