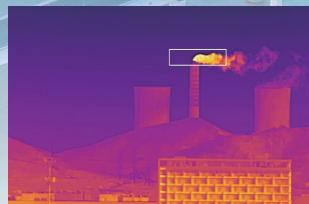
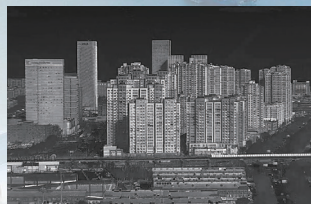




# PC8 Series

## Multi-Spectrum PTZ Camera

PC8 series is a long-range surveillance solution that integrates HD visible light, laser illumination, infrared thermal imaging and PTZ system, with intelligent functions such as fire point detection, tripwire intrusion, and regional intrusion detection inside. It provides all-weather, 24/7 surveillance for scenarios such as border/coastal surveillance, forest fire prevention and critical area protection.



### Industry-Leading Infrared Detector

Adopts the latest 12 $\mu$ m uncooled infrared detector and advanced infrared image algorithms to ensure clear imaging at greater distances.

### Long-Range Detection

Supports 25~225mm continuous zoom lens for thermal imaging cameras and 15~775mm continuous zoom lens for visible light cameras.

### Intelligent Video Analysis

Support tripwire/intrusion detection, as well as intelligent detection of fire point.

### Multi-Spectrum

Supports a maximum thermal imaging resolution of 1.3 megapixels (1280 $\times$ 1024) and a maximum visible light resolution of 4 megapixels (2688 $\times$ 1520), laser illumination 3km.

### Intelligent Fire Detection Algorithm

Features an integrated intelligent fire detection algorithm for efficient and accurate monitoring, as well as reduced false alarms.

### Platform Integration

Support ONVIF, provide SDK&demo for development; provide NVR and VMS software for application.

## Specifications

Technical Specifications	PC864L3	PC8S4L3
	Thermal Module	
Detector Type	VOx, uncooled FPA detector	
Spectral Range	8~14μm	
NETD	≤30mK(@25°C,F#1.0,25Hz)	
Resolution	640×512	1280×1024
Pixel Pitch	12μm	
Focal Length	30~150mm	25~225mm
	Optical Module	
Sensor	1/1.8" 4-megapixel CMOS image sensor	
Resolution	2688×1520	
Focal Length	6~300mm	15~775mm
	Laser Parameters	
Laser Distance	3000m	
	PTZ	
Pan	360° continuous, 0.01°~60°/s	
Tilt	-60°~+60°, 0.01°~15°/s	
Scan Mode	Preset/Pattern Scan/Patrol Scan/ Linear Scan/Panorama Scan	
	Smart Function	
Fire Detection	Support	
VCA	Support Line Crossing&Intrusion detection	
Linkage Action	Video/ Snapshot/Email/Alarm output	
	System Interface	
Power	DC 48V±15%	
Network	1×RJ45 10M/100M self-adaptive interface	
Audio Interface	1×input, 1×output	
Alarm Interface	1×input, 1×output	
Storage Interface	Micro SD memory (maximum 256G)	
R485 Interface	1×RS485	
	General	
Work Environment	-40°C~+70°C; <90%RH	
Protection	IP66 Standard; TVS 6000V Lightning Protection, Surge Protection and Voltage Transient Protection	
Power Consumption	≤220W	
Dimensions (mm)	645×680.5×550	
Mounting method	Pedestal mounted	
Weight	48kg	

## Application Scenarios



Urban High-Altitude Observation



Border and Coastal Surveillance



Forest Fire Prevention



Critical Infrastructure Protection

## RayThink Technology Co., Ltd.

✉ sales@raythink-tech.com

☎ +86-19806191838

🌐 www.raythink-tech.com

📍 Room 3002, Building 2, No.5 Wanshoushan Road, Fulaishan Street, Yantai Area of China (Shandong) Pilot Free Trade Zone

■ This manual is illustrative only. Technical specifications are subject to change without prior notice.