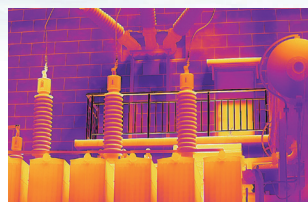
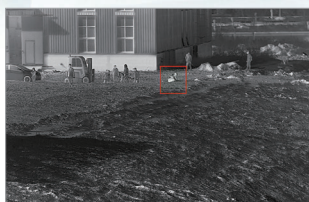




PC2 Series

Dual-Spectrum PTZ Camera

PC2 Series designed for inspection and status monitoring by using infrared thermal imaging and HD visible light imaging. It is able to set preset and rules to analyze temperature data and trigger alarms. Meanwhile, intelligent functions like fire point detection, tripwire/intrusion detection are also integrated in the camera.



12μm Uncooled Infrared Detector

Adopting the latest 12μm uncooled infrared detectors, integrated with advanced infrared imaging algorithms for better image quality.



Accurate Temperature Measurement

Measurement range from -20°C to 550°C, accuracy $\pm 2^{\circ}\text{C}$ or 2%.



Intelligent Video Analysis

Support tripwire/intrusion detection, as well as intelligent detection of fire point.



Dual-Spectrum Imaging

All-weather, 24/7 security monitoring with dual thermal&visible light imaging.



Intelligent Fire Detection Algorithm

Features an integrated intelligent fire detection algorithm for efficient and accurate monitoring, as well as reduced false alarms.



Platform Integration

Support ONVIF, provide SDK&demo for development; provide NVR and VMS software for application.

Specifications

Technical Specifications	PC264T1
Thermal Module	
Detector Type	VOx, uncooled FPA detector
Spectral Range	8~14μm
NETD	≤40mK@25°C,F#1.0
Resolution	640×512
Pixel Pitch	12μm
Focal Length	9.1mm/13mm/19mm/25mm/35mm
Optical Module	
Sensor	1/1.8" 4-megapixel CMOS image sensor
Maximum Image Resolution	2688×1520
Focal Length	6.5mm~130mm 20× optical zoom
PTZ	
Pan	360° continuous, 0.1°~100°/s
Tilt	-90°~+90°, 0.1°~60°/s
Scan Mode	Preset/Pattern Scan/Patrol Scan/ Linear Scan/Panorama Scan
Temperature Measurement	
Measurement Range	-20°C~+550°C
Measurement Accuracy	±2°C or ±2%
Smart Function	
Fire Detection	Support
Hot Spot and Cold Spot Tracing	Support
VCA	Support Line Crossing&Intrusion detection
System Interface	
Power	DC 12V±25%
Network	1×RJ45 10M/100M self-adaptive interface
Audio Input	1×input
Audio Output	1×output
Alarm Input	2×input
Alarm Output	2×output
Storage Interface	Micro SD card (up to 256G)
RS485 Interface	1×RS485
General	
Work Environment	-40°C~+70°C; <90%RH
Protection	IP66
Dimensions (mm)	358× 164.5× 203
Weight	4.5kg

Application Scenarios



Park Monitoring



Device Temperature Monitoring



Robot Routine Inspection



Electric Routine Inspection

RayThink Technology Co., Ltd.

✉ sales@raythink-tech.com

☎ +86-19806191838

🌐 www.raythink-tech.com

📍 Room 3002, Building 2, No.5 Wanshoushan Road, Fulaishan Street, Yantai Area of China (Shandong) Pilot Free Trade Zone

■ This manual is illustrative only. Technical specifications are subject to change without prior notice.