



CX200 SE+

Handheld Thermal Camera

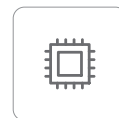
Equipped with a high-sensitivity infrared detector with a resolution of 256×192 , based on an intelligent image algorithm, the CX200 SE+ handheld thermal camera can generate clearer and sharper thermal images. The product has been completely upgraded to give users a better experience.



Product Highlights

Image+: distinguish smaller temperature differences and more details

- Equipped with a self-developed $12\mu\text{m}$ 256×192 uncooled infrared detector.
- NETD as low as 40mK, capturing smaller temperature differences.
- Intelligent image algorithm applied, displaying clearer details of temperature measurement targets and sharper images.



Feature+: professional grade, full services based on thermal sensors, catering to all industrial control scenarios

- Shorter startup duration of 6s and smooth operation response.
- Support automatic switching of temperature measurement modes for efficient operations.
- Support built-in video taking to facilitate analysis and recording.



Performance+: rugged, easy to use, and quick to deploy

- IP54 waterproof and dustproof, and 2m drop protection
- A battery life of 9 hours.
- Built-in 32GB memory card, expandable to 128GB



Software+: complete software ecosystem

- Support complete secondary analysis software for PC

Specifications

Thermal Imaging

| | |
|----------------------------|--|
| Detector Type | 12μm uncooled infrared detector |
| Infrared Resolution | 256×192 |
| Spectral Band | 7.5-14μm |
| Thermal Sensitivity (NETD) | <40mK (25°C,F1.0) |
| Frame Rate | 25Hz |
| Lens Focal Length | 3.2mm |
| FOV | 56°×42° |
| Spatial Resolution (IFOV) | 3.75mrad |
| Focus Mode | Fixed focus |
| Minimum Imaging Distance | 0.3m |
| Measurement Range | -20°C ~ +150°C, 100°C ~ +400°C |
| Measurement Accuracy | ±2°C or ±2% of readings, whichever is greater. |

Imaging Display

| | |
|---------------------------|-------------------|
| Display | 2.8 inch, 320×240 |
| Digital Zoom | 1×, 2×, 4× |
| Palettes | 4 options |
| Image Mode | Infrared |
| Temperature Width Stretch | Auto |

Measurement and Analysis

| | |
|----------------------------------|--|
| Analysis Functions on the Device | Central temperature point/Highest temperature point/Lowest temperature point |
| Supporting Software | PC (Infrared Analysis Software) |

Image Storage

| | |
|----------------|-----------------------------------|
| Storage Medium | Standard 32GB MicroSD, up to 128G |
|----------------|-----------------------------------|

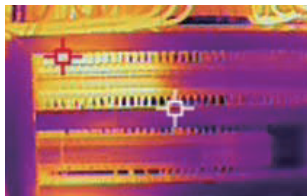
System Functions

| | |
|------------------|---|
| Alarm Type | Highest/Lowest temperature alarm in full frame; Image pop-ups, flash prompts; Auto image capture at alarm time (with temperature data). |
| Power Management | Auto shut-down setting |

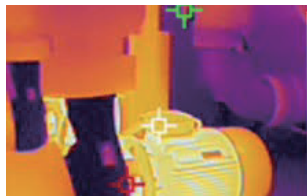
Others

| | |
|---------------------------|---|
| Battery | Built-in rechargeable lithium-ion battery |
| Charging Mode | USB Type-C |
| Battery Life | About 9h |
| Interface | USB Type-C, SD card |
| Tripod Socket | UNC 1/4-20 interface for tripod |
| Operating Temperature | -10°C~+50°C |
| Operating Humidity | 10%-95% (non-condensing) |
| Storage Temperature | -20°C~+60°C |
| Ingress Protection Rating | IP54 |
| Shock and Vibration | Shock: 25g (IEC 60068-2-27); vibration: 2.5g (IEC60068-2-6) |
| Weight and Dimensions | About 520g, 237×75×92mm |
| Authentication | CE/RoHS/CMA, etc. |
| Packing List | Infrared camera × 1, USB cable, 32GB SD card, user manual, storage bag, certificate of qualification, calibration certificate |

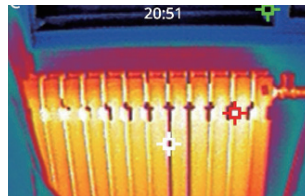
Applications



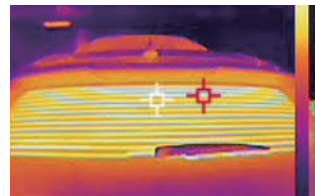
Power Maintenance



Equipment Inspection



HVAC Leak Detection



Automotive Maintenance

RayThink Technology Co., Ltd.

Company Address: No.5 Wanshoushan Road, Fulaishan Street, Yantai Area of China (Shandong) Pilot Free Trade Zone
Postal Code: 264000 Official Website: <http://www.raythink-tech.com> Service Email: sales@raythink-tech.com

*The information is for illustrative purposes only. The pictures and technical specifications are subject to change without prior notice. Sample No.: G2024-CX200SE+-2P001