

## QC-548M1F

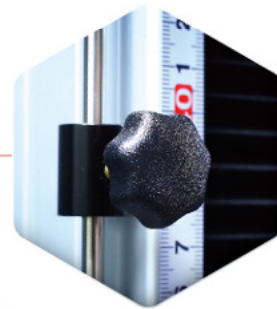
### Computerized Tensile (compression) Testing Machine

#### Standard

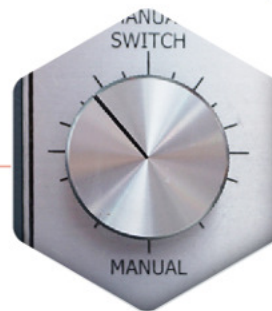
ISO 7500-1, ASTM E4 , ASTM D-76, DIN5122 , JIS B7721/B7733 , EN 1002-2, BS1610,GB T228

#### Industry

Rubber, Plastic, Paper, Textile, Metal, Wood, Tape, Electric, Package, Medical, Construction



Limit Switch



Jog controller



Up and down button



Common Joint for Both Tensile and Compression Test

#### Description

One column type has a better design of the machine column and operation. The machine adopts servo motor and high precise ball screw. QC-548M1F is suitable for the test force below 5kN. User can base on the specimen length and elongation to choose the machine stroke. We can provide complete planning for grips to test with different test methods.

The dedicated software for M1F can be installed under Windows 7/8/10, it is available for tensile, compression, bending, peeling, constant tensile or compression tests and so on. The software is quite user friendly and easy to learn, it can support different unit (imperial or metric), real-time curve graph display and provide complete data analysis function. All the report can be adjusted, full analysis or save after finish the test. User can choose the optional display for stand alone operation to have a quick test.

## Specification

Model	QC-548M1F-S	QC-548M1F-M
Max. Capacity	5 kN	
Units	Force: gf, kgf, lbf, N, kN, ozf, tonf(SI), ton(long), tonf(short) Pressure: Kpa, Mpa, psi, bar, mm-Aq, mm-Hg	
Force Resolution	31 bits	
Force Precision	1/50,000	
Test Stroke(w/o grip)	400mm	800mm
Stroke Resolution	0.0001mm	
Space Between Columns	80mm	
Rigidity	4.1 kN/mm (Vertical Rigidity)	
Speed Range	0.2 ~ 2000mm/min (digital type setting)	
Speed Accuracy	Lower 1%	
PC-Port	RJ45(TCP/IP)	
Data Sampling Rate	Max.400Hz	
Motor Type	Servo Motor	
Feature	<ul style="list-style-type: none"> <li>※ Force, displacement, time, stress, and strain display in real time</li> <li>※ The calibration parameter is recorded automatically in the loadcell. When it is replaced, no adjustment is required.</li> <li>※ The displacement sensor can be recognized by the controller automatically. When it is replaced, no complicated setting is required.</li> <li>※ User-friendly test settings: moving direction, force/displacement zeroed automatically, test speed, pause are adjustable.</li> <li>※ Automatic return after the test</li> <li>※ Machine protection by force, time, displacement, etc.</li> <li>※ The jog precisely controls displacement.</li> <li>※ Optional display is available for stand-alone mode.</li> </ul>	
Power Supply	Single Phase, 200 ~ 240VAC · 5A	
Dimension	50× 50 × 105 cm	50× 50 × 145 cm
Weight	65 kgf	80 kgf

## Optional accessories - Extensometer



**QC-557 Short extensometer**

For samples with elongation below 50%



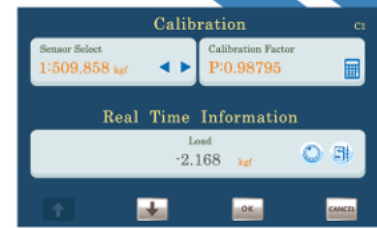
**QC-551 Long extensometer**

For samples with elongation above 20%



## Optional accessories - Display

- A 7-inch TFT colored touch screen
- Available to support the protection of stop condition for over stroke, over capacity and over time.
- Chinese, English, Japanese, available
- Force, stress, torque, displacement, time are indicated
- Test setting: Test speed, direction, automatic return, machine stop at break
- Data analysis: Maximum force, interval force, force at break, etc.
- Protection from excessive test stroke, capacity and time
- Up to 50 data can be saved by USB
- It can be restored to factory settings.
- It can be calibrated in stand-alone mode
- Metric/imperial units adjustable
- Supports various signals



	Load	Max. Load	Disp.
	100.000	100.000	200.000
Time	Max. Load	Max. Displacement	Strength
60.000	kgf	mm	kgf/mm
1	10.000	10.000	10.000
2	10.000	10.000	10.000
3	10.000	10.000	10.000
4	10.000	10.000	10.000
5	99.000	999.000	9999.000
(T)			



## Software

- It is operated by keyboard and mouse; grip position is controllable by up/down button
- Adjustment of X-Y axis on the graph: curves' point marking, interval, slope, etc.
- Different test patterns available: Hold tensile, special setting of grip movement
- TCP / IP interface (two-way transmission). Machine can be controlled by PC
- Test setting can be saved as module to reduce mistake and errors
- Available in Chinese, English, Japanese, Korean, Spanish, Polish
- Multiple test data can be shown simultaneously on the software
- Tensile, compression, bending, peeling, spring tests available
- The software can show data, graphs or both at the same time
- Compatible with Window 7/8/10
- Sampling rate up to 400Hz
- The software supports various I / O signals
- Unit can be chosen between metric or imperial
- The data table can be modified based on user's preference
- Data can be renamed and formula can be created
- Data processing: store, call, list, statistical comparison, etc.
- Protection from excessive test stroke, capacity and time
- Sample specification can be saved as module for quick use
- Upper and lower limits can be selected to access key data



## Peeling Test Report



Date 2018/01/21  
Time 10:38:39

### Company Information

Name Cometech Testing Machines Co., Ltd.  
Address No.49, Ln.39, Lianucn Rd., Fengyuan Dist., Taichung City, 42062 Taiwan(R.O.C.)  
E-mail: sales@come-tech.com.tw  
Tel: +886-4-25368881  
Fax: +886-4-25368883

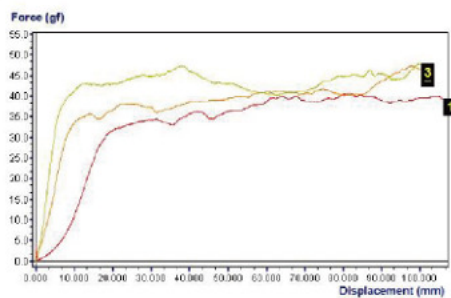
### Specification

Test Speed 300 mm/min Width 18.63 mm

### Data Table

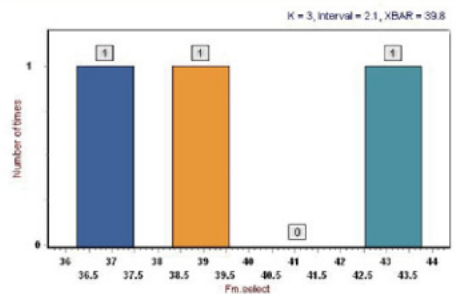
Item1	Fm select	F max select	F peak	Fm select/W	Peak avg
Unit	gf	gf	gf	N/mm	gf
1	38.3	43.2	38.9	9.319	43.5
2	39.3	41.7	40.5	9.321	43.5
3	43.2	47.3	43.9	9.320	45.7
Mean	39.8	43.1	40.5	9.321	43.0

### Graph

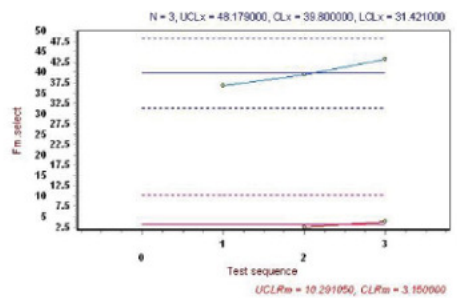


1

### Histogram



### Control Chart



Tested By:

Approved:

2

\*Cometech reserves ultimate modification right of product specification.

COMETECH TESTING MACHINES CO.,LTD.

No.49,Ln,39,Lianucn Rd, Fengyuan Dist, Taichung City420,Taiwan

Tel:886-4-25368881 / Fax:886-4-25368883

E-mail: sales@come-tech.com.tw

URL: <http://www.come-tech.com.tw>

