

QC-505M1F (50kN)

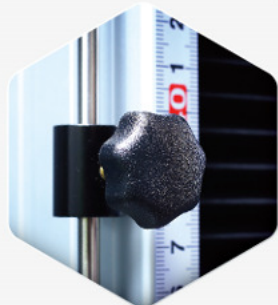
Computerized Tensile (compression) testing machine

Standard

ISO 7500-1, ASTM E4, ASTM D-76, DIN5122, JIS B7721/B7733, EN 1002-2, BS1610, GB T228

Industry

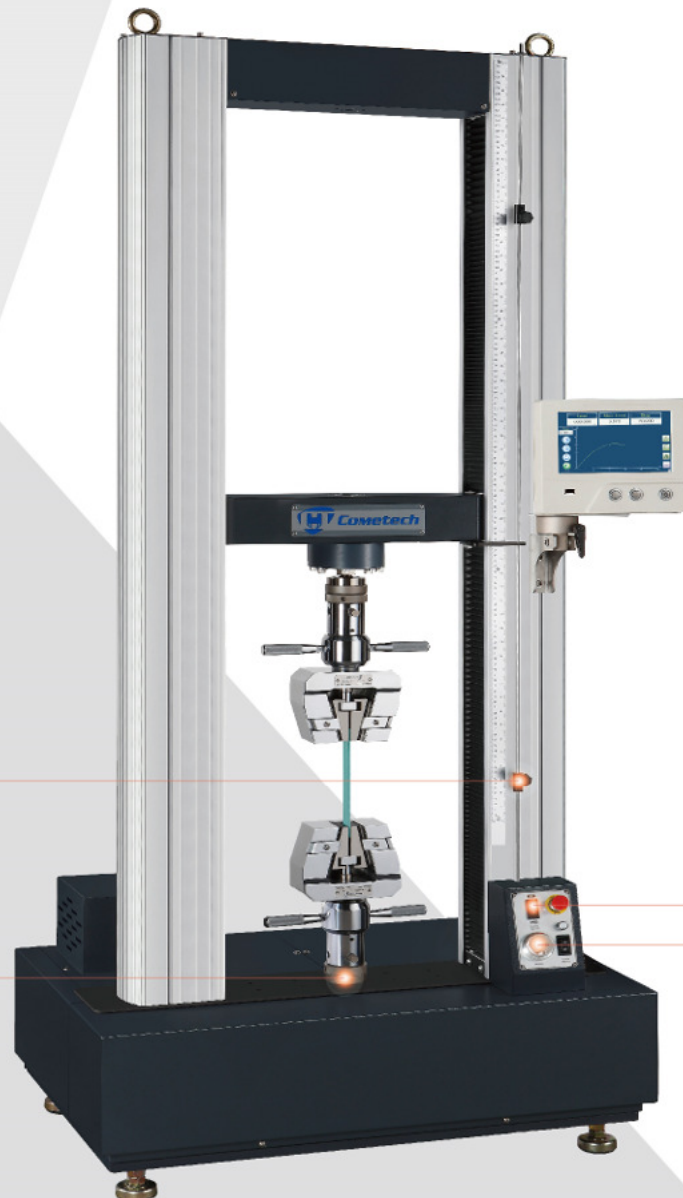
Plastic, Textile, Metal, Architecture



Limit Switch



Common Joint for Both Tensile and Compression Test



Up and down button



Jog controller

Description

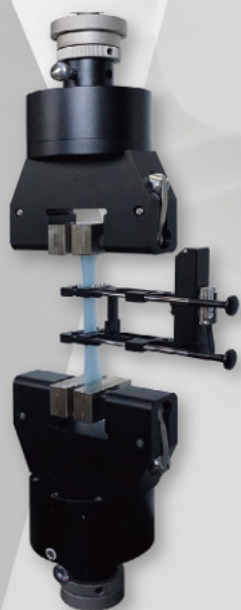
The testing machine has two test spaces with capacity up to 50kN. The rigid structure and the durable Servo motor transmission components assure a steady operation. The machine's standardized design enables the extension of various accessories used for different types of test and guarantees precise test results under a noiseless environment.

The M1F software is compatible with Windows XP/7/8/10 and is able to analyze tests such as tensile (compression), bending, peeling, hold tensile (compression). The software is user-friendly and available in many languages and units (metric or imperial); it shows integrated test data in real-time graph and test report for a complete analysis. The display can be an optional accessory in stand-alone mode and it records useful information rapidly.

Specification

| Model | QC-505M1F |
|----------------------------|---|
| Maximum capacity | 50 kN |
| Units | Force: gf, kgf, lbf, N, kN, ozf, tonf(SI), ton(long), tonf(short) Pressure: Kpa, Mpa, psi, bar, mm-Aq, mm-Hg |
| Force resolution | 31 bits |
| Force precision | 1/50,000 |
| Test stroke (w/o grip) | 1100mm |
| Stroke resolution | 0.0001mm |
| Space between columns | 420mm (550 mm, 680 mm, 800 mm optional) |
| Speed range | 0.2 - 600 mm/min (adjustable via PC) |
| PC-port | RJ45(TCP/IP) [software optional] |
| Data sampling rate | 400 Hz (Max.) |
| Hardware safety protection | Upper limit, lower limit, emergency stop button |
| Motor type | Servo Motor |
| Feature | <ul style="list-style-type: none"> ※ Automatic reading of loadcell's information ※ Automatic reading of displacement sensor's information ※ External analog input (voltage or current) ※ Zero force setting before test ※ Protection from overload |
| Power supply | Single phase 200 - 240VAC, 8A |
| Dimension | 90× 60 × 195cm |
| Weight | 280 kg |

Optional accessories - Extensometer



QC-557 Short extensometer

For samples with elongation below 50%

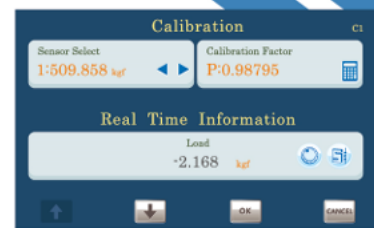


QC-551 Long extensometer

For samples with elongation above 20%

Optional accessories - Display

- A 7-inch TFT colored touch screen
- Chinese, English, Japanese, available
- Force, stress, torque, displacement, time are indicated
- Test setting: Test speed, direction, automatic return, machine stop at break
- Data analysis: Maximum force, interval force, force at break, etc.
- Protection from excessive test stroke, capacity and time
- Up to 50 data can be saved by USB
- It can be restored to factory settings.
- It can be calibrated in stand-alone mode
- Metric/imperial units adjustable
- Supports various signals



| | Load | Max. Load | Disp. |
|------------|-----------|-------------------|----------|
| | 100.000 | 100.000 | 200.000 |
| Time | Max. Load | Max. Displacement | Strength |
| 60.000 sec | kgf | mm | kgf/mm |
| 1 | 10.000 | 10.000 | 10.000 |
| 2 | 10.000 | 10.000 | 10.000 |
| 3 | 10.000 | 10.000 | 10.000 |
| 4 | 10.000 | 10.000 | 10.000 |
| 5 | 99.000 | 999.000 | 9999.000 |



Software

- It is operated by keyboard and mouse; grip position is controllable by up/down button
- Adjustment of X-Y axis on the graph: curves' point marking, interval, slope, etc.
- Different test patterns available: Hold tensile, special setting of grip movement
- TCP / IP interface (two-way transmission). Machine can be controlled by PC
- Test setting can be saved as module to reduce mistake and errors
- Available in Chinese, English, Japanese, Korean, Spanish, Polish
- Multiple test data can be shown simultaneously on the software
- Tensile, compression, bending, peeling, spring tests available
- The software can show data, graphs or both at the same time
- Compatible with Window 7/8/10
- Sampling rate up to 400Hz
- The software supports various I / O signals
- Unit can be chosen between metric or imperial
- The data table can be modified based on user's preference
- Data can be renamed and formula can be created
- Data processing: store, call, list, statistical comparison, etc.
- Protection from excessive test stroke, capacity and time
- Sample specification can be saved as module for quick use
- Upper and lower limits can be selected to access key data



Peeling Test Report



Date 2018/02/01
Time 10:38:30

Company Information

Name Cometech Testing Machines Co., Ltd.
Address No.49, Ln. 39, Lianucn Rd., Fengyuan Dist., Taichung City, 42062 Taiwan(R.O.C.)
E-mail: sales@come-tech.com.tw
Tel: +886-4-25368881
Fax: +886-4-25368883

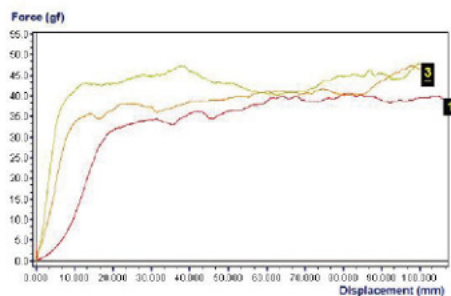
Specification

Test Speed 300 mm/min Width 18.63 mm

Data Table

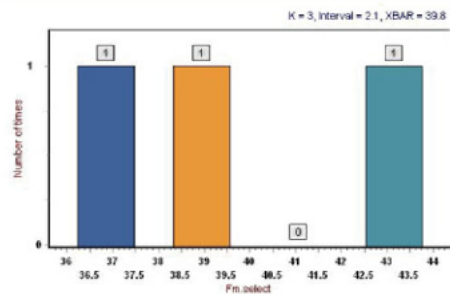
| Item1 | Fm select | F max select | F peak | Fm select/W | Peak avg |
|-------|-----------|--------------|--------|-------------|----------|
| Item2 | | | | | |
| Unit | gf | gf | gf | N/mm | gf |
| 1 | 38.3 | 43.2 | 38.9 | 9.719 | 43.5 |
| 2 | 39.3 | 41.7 | 40.5 | 9.521 | 43.5 |
| 3 | 43.2 | 47.3 | 43.9 | 9.559 | 45.7 |
| Mean | 39.8 | 43.1 | 40.5 | 9.521 | 43.0 |

Graph

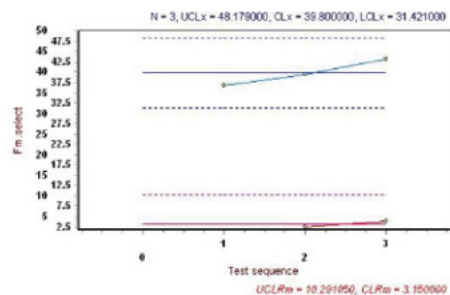


1

Histogram



Control Chart



Tested By:

Approved:

2

*Cometech reserves ultimate modification right of product specification.

COMETECH TESTING MACHINES CO.,LTD.

No.49,Ln,39,Lianucn Rd, Fengyuan Dist, Taichung City420,Taiwan

Tel:886-4-25368881 / Fax:886-4-25368883

E-mail: sales@come-tech.com.tw

URL: <http://www.come-tech.com.tw>

